

THE MESSENGER



To live so that others will become disciples of Jesus Christ for the transformation of the world.



I use a fun application on my phone called Timehop. It shows me what I posted on Facebook and Twitter and what photos I took on this date over the years past.

It is a fun look at where I've been, what I've done and also offers illumination for where I'm going.

On the day that I am writing this, I saw a picture from the day that I was preparing to go into to my first appointment 5 years ago. The stacks of boxes from a tiny Chicago apartment ready to make its way to Wisconsin where would be serving part time reminds of how far I've come.

Looking back offers us a glimpse at where we have come from and helps to illuminate where we are going, because it reminds us where we started.

A year ago, Westlake UMC made a radical commitment to add a second campus, bringing me on as a campus pastor. This decision of risk-taking discipleship came at the end of a year-long process of prayer and planning and a years-long partnership between Simpson UMC and Westlake UMC.

Over the last year, we've been walking together into a new land, on a wilderness journey of discovering each other and working to build our presence in Cleveland.

Over the past year, this work has borne fruit - both expected and unexpected. In the very beginning we

Looking back offers us a glimpse at where we have come from and helps to illuminate where we are going, because it reminds us where we started.

successfully completed all the business, financial and legal portions of the partnership, in particular the transfer of assets from Simpson to Westlake. We settled on names for both our campuses - with Simpson Metro West (SMW) in Cleveland and the Suburban Campus (SC) in Westlake.

We've entered into an unexpected partnership with the Nehemiah Mission to join forces for a Tuesday night dinner worship called Bread on Bridge in the Detroit Shoreway Neighborhood. Each week, an average of 25 to 30 people from the neighborhood gather to eat and worship together.

We've worked to combine the efforts of two youth ministries and as you're reading this, youth from both campuses are heading to Detroit for a week of mission work at Cass Community Social Services.

(continued pg. 2)



A SITE OF WESTLAKE UNITED METHODIST CHURCH

Suburban Campus

27650 Center Ridge Road • Westlake, Ohio 44145
(440) 871-3088 • westlakeumc.org
Sunday Worship at 8:15, 10:00 and 11:28 a.m.



A SITE OF WESTLAKE UNITED METHODIST CHURCH

Simpson Metro West Campus

8519 Clark Ave • Cleveland, Ohio 44102
(440) 871-3088 • westlakeumc.org/simpson
Sunday Worship at 10:45 a.m.

News and Committee Reports

(continued from pg. 1)

We continue to service the neighborhood around Simpson and beyond through our food pantry and community meal. Sunday School continues to offer spiritual and religious education with lectionary-based curriculum.

We hired a new worship leader after Janice Vaughn, the longtime organist, decided to retire. Mario Clopton-Zymler came on board in January.

One of the hits of the year was our "Trunk or Treat" event that attracted upwards of 100 families from the neighborhood, with an estimated 350+ people coming to the church for this event.

Riding on the success of this family event, we brought Vacation Bible School back to the SMW neighborhood for the first time in over a decade during the middle of June.

We met 5 new families from the neighborhood through the programming people from both campuses came together to provide. One of the great gifts of that program was that we were able to provide a bike to every kid who needed one through partnerships with Brecksville and Rocky River UMCs' bicycle programs.

The past year has been a busy one of getting to know one another better and beginning to understand what it means to be one church in two locations.

Looking ahead, we will continue to make contacts in the community, hope to repeat the success of Trunk or Treat (hopefully outdoors this year if the weather cooperates!), develop partnerships to offer needed programming to the neighborhood, and will be beginning the difficult work of evaluating the building and the property.

Rev. Mollie and I are also engaging Rev. Dr. Sue Nelson Kibbey, former Executive Pastor of Ginghamburg UMC in Tipp City, to offer guidance, consultation and assistance in the year ahead. This work with Sue is supported by the conference as a part of their support of this new ministry direction you all have chosen to take.

I know the journey is still just getting started. I am excited for the seeds we've planted over the past year together and can't wait to see what God is going to grow in our midst in the year ahead!

Blessings,

Rev. Paige

SIMPSON METRO WEST

Save the Date!

Outdoor Worship and End of Summer Picnic Potluck

Mark your calendars – on Aug. 25 at 10:45, we will worship together at Brookside Park in the Cleveland Metro Parks (3900 John Nagy Blvd, Cleveland, OH 44144)! This offsite worship and family picnic is open to everyone at Westlake UMC and is a great opportunity to share in the beauty of God's creation while building relationships throughout our two campuses. Come let us worship together!

AV MINISTRY HELP NEEDED.

We have an immediate need for help in both the 10 am and 11:28 services. The 10 am service requires two operators one for video streaming and one for audio/ projector. We will provide necessary training and supervision. The only requirements are a passion to serve and commitment. **Contact Bob Myers 216-701-2064 or rdmyers2@sbcglobal.net for further information.**

BACK TO SCHOOL ICE CREAM PARTY FOR THE SIMPSON METRO WEST NEIGHBORHOOD

SUNDAY, JULY 28TH AT 1PM - ALL WELCOME!

Join us as we celebrate summer and provide encouragement to the children and families of the Cleveland neighborhood who will be returning to school in early August! Ice cream will be served and Backpack and school supplies will be distributed. We will also have games and other interactive activities as we see our friends from VBS again and make new friends. **Please sign up to help with either set up, serving or clean up: <https://forms.gle/FADN5onDY5vAPnUx5>**



Find us on:
facebook®

**BE SURE TO LIKE OUR WUMC FACEBOOK PAGE
FOR THE LATEST NEWS AND EVENTS! [CLICK HERE](#)**

News and Committee Reports (cont.)

Our Mission:

TO LIVE SO THAT OTHERS WILL WANT
TO BE FOLLOWERS OF JESUS.

LET ALL YOU DO
— BE DONE IN —
LOVE
— 1 CORINTHIANS 16:14 —



2019 Cruisin' Westlake Update

SUNDAY, AUGUST 11th from 2-5 p.m.
at Westlake Recreation Center 28955 Hillard Blvd.

Come admire some classic automobiles while enjoying live 50's & 60's music by Screaming Armadillos and Eddie and the Edsels. Admission is free and The Little Piggy food truck will be on site.

Volunteers needed!

Group one volunteers: Site set up crew, 1:00 - 2:00 p.m.
Need four volunteers.

Group two volunteers: Cruiser sign in sheet with contact information, 1:30-5:00 p.m. Need two volunteers.

Group three volunteers: Event crew 1:30-5:00 p.m. Door prize tickets, selection window card for entrants and WUMC information card. Need two volunteers.

*Keep the faith,
Bob Myers - 216-701-2064*

Get
CONNECTED

FIND US ONLINE

WWW.WESTLAKEUMC.ORG
WWW.WESTLAKEUMC.ORG/SIMPSON

Small Groups & Spiritual Growth

WOMEN'S SATURDAY MORNING RETREAT

SAT. OCT. 26 - 8:30 - 11:30 A.M.

Plans are being made for a morning to recharge, feel encouraged and spiritually fed. Please hold the date on your calendar to join Rev. Beth McKee and women from both our campuses for a morning spent on mind, body and spirit at the Woman's Club Pavilion in Lakewood Park, Lakewood, Ohio. **Questions please contact Gretty Myers at gretty.myers@gmail.com.**

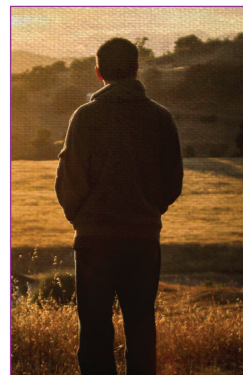
MEDITATIVE WALK AND JOURNALING

Sat. Aug. 3 - 9:00 am - noon
(rain date Sat. Aug 10)

Did you know people spending 2 hours or more per week in nature are significantly more likely to report good health and life satisfaction? Come along for a nature walk on our church forest path to listen and learn from the natural world.

We'll meet in the back church parking lot at WUMC Westlake Campus. Bring along a chair, a journal and wear comfortable clothing. The morning experience will be led by Mike Reiling of River's Edge Retreat Center.

All ages welcome! Free will offering accepted. **Questions please contact Gretty Myers at gretty.myers@gmail.com.**



Mission Opportunities & Updates



SCHOOL BACKPACKS AND SUPPLIES SMW & OHIO GUIDESTONE

We are collecting school supplies and backpacks for Ohio Guidestone by July 28th. (Many Cleveland schools start 8/12!).

Some items requested are: No. 2 pencils, plastic rulers, Crayola crayons and/or markers, wide-ruled paper, pocket folders, glue sticks.

A full list is posted on the Mission Bulletin board, copies are available. There is a bin outside the church office for your donations.



CONTINUING MISSION OPPORTUNITIES:

We are collecting large reusable shopping bags for the monthly food pantry at Simpson Metro West Campus. Food donations always welcome. We also collect trial size personal hygiene supplies and boxes of Kleenex.

Please put the donations in the designated box located at the back in the last pew at the Simpson Metro West Campus, or the blue cart in the lobby of Suburban campus.

GIRLS HYGIENE KIT

Many thanks to all who gave of their time and donations of supplies or financial support for the Girls' hygiene kits going with Rev. Paige to Cambodia. We were able to make 99 kits that will be distributed to make a difference in the lives of young women in Cambodia.

**PLEASE KEEP OUR YOUTH IN YOUR PRAYERS
AS THEY SERVE IN MISSION AT
CASS COMMUNITY SOCIAL SERVICES IN
DETROIT JULY 7-13**

ENJOY A DAY OF FELLOWSHIP & CONVERSATION TO LEARN ABOUT LEADING A MISSION TEAM LOCALLY, NATIONALLY & INTERNATIONALLY!

Share best practices for leading a mission team locally, nationally, and internationally. \$35.00 Registration (cost includes lunch, team leader manual, and the required background check). WUMC Mission team will pay for the training. Sat, August 17, 2019 9:30 AM – 4:00 PM EDT, Urban Mission-301 N 5th St, Steubenville, OH 43952. Registration deadline is August 14, 2019. **Register on line at: <https://www.eventbrite.com/e/umvim-team-leader-training-urban-mission-of-steubenville-registration-55344444724>**

WEST SIDE COMMUNITY HOUSE

We are looking for an individual, or two, to coordinate groups to provide monthly meals for West Side Community House September through May. List of previous groups who have served and menus are available. Please prayerfully consider serving for this very worthwhile ministry.

Contact Kay Martin Mission@westlakeumc.org to help or with any questions.

TWICE BLESSED FREE STORE



6515 Bridge Ave, Cleveland

Current needs: Personal care items, toothbrushes/paste, deodorant, etc. , toilet paper, Gently used summer clothing and household items. Clothing must be washed and stain free. Place donations in the large wooden box in Fellowship Hall.

If the box is full or you have several bags PLEASE take donations directly to Rocky River UMC, 19414 Detroit Rd, Rocky River, only 6 miles, 14 minutes away during office hours 9:00-4:00 M-F.

Compassion & Congregational Care



JOIN US for the The Daniel Plan 5 Essentials!

It's not too late to start this journey or continue walking the path to a healthy, transformed life.

Join the online group focusing on more of the Daniel Plan health benefits: Food, Faith, Fitness, Friends & Focus!

Sign up with John and Amanda at johnpeshek46@gmail.com.

Please contact Gretty Myers gretty.myers@gmail.com if you have questions.

SMALL GROUP MEETING OPTIONS

Sundays at 9 a.m. - Room 107 - meets every other week

INDIVIDUAL PRAYER TIME & COMMUNION *With Prayer Partners*

SUNDAYS 9 – 9:30 AM

OR 11 – 11:30 AM

AT THE SUBURBAN CAMPUS

Stephen Ministers are available every Sunday morning in Room 207 (new location) from 9 – 9:30 a.m. and also 11 – 11:30 a.m. to offer a quiet, reflective time for individual prayer and communion. We also have sets of prayer beads available for you during this time.

ALL ARE WELCOME!



HEALTH AND WELLNESS TEAM



As our wellness journey continues at WUMC, the Health and Wellness Team is planning monthly opportunities for our congregation to experience ways to incorporate healthy options into our lives. Watch for monthly wellness programs in future communications with topics like *proper use of medications and their disposal, cultivating self-awareness and mindfulness practices, local resources to connect with as we age, youth drug and alcohol concerns, easy to enter walking groups*. Please contact gretty.myers@gmail.com with your ideas!

HEALTH AND WELLNESS *Summer Tip:*

On Pentecost Sunday, Rev. Mollie mentioned the words “communicate” and “communication” in her sermon. This got me thinking about how important these words are in our healthcare. How we communicate our symptoms, concerns, and questions to our healthcare providers has a great impact on our overall health.

Write down questions and concerns that you may have so you can discuss them with your healthcare team. Doctors, nurses, dentists and pharmacists, communicate with your healthcare providers. It's in your health's best interest!

Watch for more health and wellness tips in future Messengers. Please contact gretty.myers@gmail.com with your ideas.

**LET'S
GROW
TOGETHER**

You don't have to do this alone.



*Matthew
18:20*

Church Family Focus

Coffee Time Fellowship

AT THE SUBURBAN CAMPUS

Summer Coffee Hour Tradition Continues

Connect with old and new church friends on the East lawn after the 10am service and before 11:28! If inclement weather, coffee hour will be held in Fellowship Hall.



OUR COFFEE HOUR FELLOWSHIP IS NOT FREE

THANKS TO THE FOLLOWING GROUPS FOR HOSTING IN JULY:

- July 7** OPEN
- July 14** Monday Evening ChristCare Group
- July 21** Trustees
- July 28** Wednesday Evening ChristCare Group

THANKS TO THE FOLLOWING GROUPS FOR HOSTING IN AUGUST:

- August 4** Schmitz & Kubancik Families
- August 11** Stephen Ministry
- August 18** OPEN
- August 25** Monday Evening ChristCare Group

ALTAR FLOWERS

AT THE SUBURBAN CAMPUS

Many thanks to those who help to beautify our Altar with the purchase of flowers. Altar flowers honor, celebrate or remember a special person or event.



THANK YOU TO OUR JULY ALTAR FLOWER SPONSORS:

- July 7** The Salis Family – *In Memory of Marjorie Lindenfeld*
- July 14** Fred & Mary Klag – *In celebration of our 65th Wedding Anniversary*
- July 21** The Wearsch & Johnston Families – *In Memory of Shirley & Johnnie Johnston*
- July 28** Amy Ginn – *In Memory of Daniel Cooper*

THANK YOU TO OUR AUGUST ALTAR FLOWER SPONSORS:

- August 4** Janice & Chris Jensen – *In Memory of our parents and grandparents*
- August 11** Duane & Nickie Miller
- August 18** Ken Wardell
- August 25** OPEN

Kid's Ministry News

Elementary Summer Sunday School for children entering K-4th Grade

Suburban Campus 10am through August 25th

Summer Sunday school will be offered in a one room schoolhouse format for kids going into K -4th grade. Sunday school kids will start in worship and depart for class following the children's message. After 10am worship, parents pick up their children in classroom 105-106. Children going into 5th and up can use the worship bags as they sit with their families and gain valuable worship experience.

WUMC nursery /pre- school will continue to be staffed during the summer months. We welcome Rita Forbush who will be working in the nursery over the summer months to cover vacations. Stop by the nursery to welcome her to our team.

Summer Sunday Teachers and Teen Helpers are needed

You will be amazed at the way God works in you as you work with our elementary children. **SignUp to serve at** <https://www.signupgenius.com/go/9040c4aaaad2fab9-2019> or contact Ellie Peiffer at faithformation@westlakeumc.org

WANT WEEKLY UPDATES FOR WHAT'S HAPPENING WITH OUR YOUTH GROUPS?

SIGN-UP TO OUR E-NEWSLETTER: [HTTP://EEPURL.COM/DD9FOX](http://EEPURL.COM/DD9FOX)

Kid's Ministry News (cont.)

Simpson Metro West Campus VBS was a big success!

We meet new families of the West 86th street and Clark neighborhoods as we “took flight to where God led us” with the Whoosh VBS program in June. Together we learned about God’s dreams for our lives and remembered the miracles God has done and continues to do as we seek freedom and justice for all. At the conclusion of the program, all children that needed a bike or helmet were given one. On Friday, the streets were filled with the kids riding their new bikes with pure joy on their faces!

It takes a village to host a successful Vacation Bible School! We had 18 staff people with 10 from SMW and 8 from the Suburban campus who were the servant leaders of the program:

- **Our Youth Staff:** Tori Rose Dailey, Cyncere & Laythan Donan, Elizabeth Peiffer
- **Our Adult Staff:** Linda Coffin, Mario Clopton-Zymler, Sue Geringer, Elaine Hermetet, Jan & Dave Kappanhagen, Char Macha, Kay Martin, Angela Monsi, Gretty Myers, Deb Renkel, Ellie Peiffer, Henry Thomas, Rev. Paige Boyer

Thanks to ALL that helped!

- **Additional Set Up & Clean Up Helpers:** Richard & Philipa Pottinger, John Rife, Gary & Jayne Linch, Jerry Peiffer, Bill Martin, Ken Wardell and Helen Schremp.
- **Those that donated Bike & Helmets:** The Steeles, Tammy Howell, the Garretts, the Goerlichs, Carole Miller, the McQualitys, the Peiffers, and the Shami family.
- **Our United Methodist connectional ministry partners that gave us bikes from their bicycle ministry programs:** Brecksville UMC -Jenny Ghee and Rocky River UMC Bike Link Up ministry – Brian Hintz.



“ROAR! LIFE IS WILD. GOD IS GOOD” Westlake Ecumenical Vacation Bible School Monday – Friday, July 15 – 19

There are still a spots for adult & teen volunteers.
Contact the Ecumenical VBS Director, Meghan Jenkins at
mjenkins24@gmail.com

DONATIONS WANTED for Summer VBS programs

- We are collecting old T-shirts...any condition, (stains and rips are okay..just clean please!) T-shirts will be cut apart to make dog toys for the ROAR VBS mission project supporting shelter animals. Please put T-shirts in the Laundry Basket in the Children’s Choir room 103 on the lower level.



Financial Information

Instead of an envelope with a check or cash on Sunday, there are two other ways you can make contributions to the General Operating Fund for Westlake UMC:



DIRECT DEPOSIT: Scheduled automatic transfers from your checking account to the WUMC account. Please contact Raphe Neapolitan, Finance Manager for the form needed at finance@westlakeumc.org



ONLINE GIVING: Use your credit card via our website at westlakeumc.org. In the lower left corner of the home page you will see a button for Online Giving — near “Live Streaming” — You do not have to login to contribute, but can create profile if desired. This can be a one-time contribution or regularly scheduled contributions.

Westlake United Methodist Church
Income and Expense Statement (UNAUDITED)
 OPERATING FUND 01, May 2019

	Current Period	Year to Date	Prior Year YTD	Prior Year	Year to Date	Annual Budget
INCOME						
CONTRIBUTION INCOME	\$57,889.63	\$242,682.74	\$39,384.00	\$207,515.47	\$262,213.75	\$637,004.96
TOTAL INCOME	57,889.63	242,682.74	39,384.00	207,515.47	262,213.75	637,004.96
EXPENSES						
ADMINISTRATIVE EXPENSE						
STAFF PARISH EXPENSE	\$27,645.57	\$137,416.97	\$24,086.24	\$116,328.35	\$146,569.75	\$355,377.34
OFFICE EXPENSE	705.94	7,017.76	825.17	5,954.10	6,803.35	16,760.00
FINANCE TEAM EXPENSE	410.75	9,691.11	437.57	2,225.89	2,050.00	5,300.00
FACILITIES EXPENSE	5,854.52	51,015.94	6,067.59	37,284.34	53,762.40	123,190.01
Subtotal Expenses	34,616.78	205,141.78	31,416.57	161,792.68	209,185.50	500,627.35
MINISTRY EXPENSE						
MUSIC EXPENSE	166.29	2,488.30	3.99	606.92	1,333.35	3,200.00
WORSHIP EXPENSE	281.65	2,031.90	831.95	3,461.05	4,073.00	10,176.00
EDUCATION EXPENSE	678.30	3,483.03	489.22	3,922.30	8,065.00	19,790.00
OUTREACH EXPENSE	718.61	2,470.62	748.68	2,727.92	5,875.00	15,605.00
CONNECTIONAL GIVING	7,023.70	34,938.70	6,550.25	32,635.44	34,768.75	83,445.00
Subtotal Ministry Expense	8,868.55	45,412.55	8,624.09	43,353.63	54,115.10	132,216.00
TOTAL EXPENSES	43,485.33	250,554.33	40,040.66	205,146.31	263,300.60	632,843.35
EXCESS INCOME\EXPENSES	\$14,404.30	-\$7,871.59	-\$656.66	\$2,369.16	-\$1,086.85	\$4,161.61

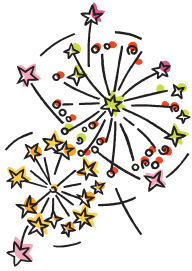


YOU CAN JOIN WESTLAKE UMC AT THE 10:00AM SERVICE WITH LIVE STREAMING FROM OUR SUBURBAN CAMPUS.**

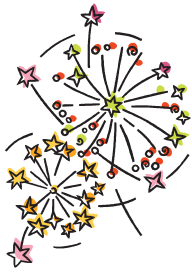


Traveling? Can't make it to church on a Sunday morning? Worship with us via our website: westlakeumc.org for the 10:00 service. You will see the link to the broadcast in the lower left corner of the home screen. You are also invited to register your attendance, send prayer requests, and/or make contributions online.

****Please note that due to copyright & licensing restrictions, not all music or multimedia presentations may be broadcast.**



July 2019



Sun	Mon	Tue	Wed	Thu	Fri	Sat
	1	2	3	4	5	6
		5:30pm Bread on Bridge Meal/Worship (Nehemiah)	1:30pm Arthritis Exer. (103) 6pm Blue Bus (SMW) 7pm 11:28 Rehearsal	Office Closed Independence Day	7am Men's Breakfast (Sammi's Deli) 5:30pm 3MB (SMW)	2pm Mission Team luggage drop off - N. Olmsted UMC 6:30pm Alcohol Anon (SMW)
7	8	9	10	11	12	13
9am Faithlinks (100) 12:30pm Mission Lunch & Commissioning (SC)	12:30pm Games 'N Such (107) 5:45pm Trustee Mtg (207) 7pm Stephen Ministry (100/7)	5:30pm Bread on Bridge Meal/Worship (Nehemiah)	1:30pm Arthritis Exer. (103) 6pm Blue Bus (SMW) 7pm 11:28 Rehearsal	5:30pm Marijuana Anon (100)	7am Men's Breakfast (Sammi's Deli) 5:30pm 3MB (SMW)	6:30pm Alcohol Anon (SMW)
Youth Mission to Detroit MI						
14	15	16	17	18	19	20
9am Faithlinks (100) 9am Daniel Plan -K. Dailey (106/107)	7 pm Finance Mtg (207)	5:30pm Bread on Bridge Meal/Worship (Nehemiah)	1:30pm Arthritis Exer. (103) 1pm Staff Meeting (207) 6pm Blue Bus (SMW) 7pm 11:28 Rehearsal	5:30pm Marijuana Anon (100)	7am Men's Breakfast (Sammi's Deli) 5:30pm 3MB (SMW)	6:30pm Alcohol Anon (SMW)
Westlake Ecumenical VBS at Dover UCC						
21	22	23	24	25	26	27
9am Faithlinks (100)		5:30pm Bread on Bridge Meal/Worship (Nehemiah)	1:30pm Arthritis Exer. (103) 5:30pm Community Meal 6pm Blue Bus (SMW) 7pm 11:28 Rehearsal	5:30pm Marijuana Anon (100)	7am Men's Breakfast (Sammi's Deli) 5:30pm 3MB (SMW)	6:30pm Alcohol Anon (SMW)
Youth to DC						
28	29	30	31			
9am Faithlinks (100) 9am Daniel Plan -K. Dailey (106/107) 1pm Back to School Ice Cream Party (SMW)	10am Food Bank Truck (SMW) 1pm Theater Group (FH)	5:30pm Bread on Bridge Meal/Worship (Nehemiah) 1pm Theater Group (FH)	9am Food Pantry (SMW) 1pm Theater Group (FH) 1:30pm Arthritis Exer. (103) 6pm Blue Bus (SMW) 7pm 11:28 Rehearsal			



August 2019



Sun	Mon	Tue	Wed	Thu	Fri	Sat
				1 1pm Theater Group (FH) 5:30pm Marijuana Anon (100) 6pm Mission Team (207)	2 7am Men's Breakfast (Sammi's Deli) 1pm Theater Group (FH) 5:30pm 3MB - (SMW)	3 9am Meditative Walk & Journaling (WJUMC parking Lot) 6:30pm Alcohol Anon (SMW)
4 9am Faithlinks (100)	5 7 pm Leadership Council (207)	6 5:30pm Bread on Bridge Meal/Worship (Nehemiah)	7 1:30pm Arthritis Exer. (103) 6pm Blue Bus (SMW) 7pm 11:28 Rehearsal	8 5:30pm Marijuana Anon (100)	9 7am Men's Breakfast (Sammi's Deli) 5:30pm 3MB - (SMW)	10 6:30pm Alcohol Anon (SMW)
11 9am Faithlinks (100) 9am Daniel Plan -K. Dailey (106/107)	12 12:30pm Games 'N Such (FH) 5:45 pm Trustees (207) 7 pm Stephen Ministry (100/7)	13 5:30pm Bread on Bridge Meal/Worship (Nehemiah)	14 1:30pm Arthritis Exer. (103) 6pm Blue Bus (SMW) 7pm 11:28 Rehearsal	15 5:30pm Marijuana Anon (100)	16 7am Men's Breakfast (Sammi's Deli) 5:30pm 3MB (SMW)	17 6:30pm Alcohol Anon (SMW)
18 9am Faithlinks (100)	19 7 pm Finance Mtg (207)	20 5:30pm Bread on Bridge Meal/Worship (Nehemiah)	21 1pm All Staff Mtg. (207) 1:30pm Arthritis Exer. (103) 6pm Blue Bus (SMW) 7pm 11:28 Rehearsal	22 5:30pm Marijuana Anon (100)	23 7am Men's Breakfast (Sammi's Deli) 5:30pm 3MB - (SMW)	24 6:30pm Alcohol Anon (SMW)
25 9am Faithlinks (100) 9am Daniel Plan -K. Dailey (106/107) 10:45am SMW Outdoor Worship & Picnic (Metro Parks)	26 10am Food Bank Truck (SMW)	27 5:30pm Bread on Bridge Meal/Worship (Nehemiah)	28 9am Food Pantry (SMW) 1:30pm Arthritis Exer. (103) 5:30pm Community Meal 6pm Blue Bus (SMW) 7pm 11:28 Rehearsal	29 5:30pm Marijuana Anon (100)	30 7am Men's Breakfast (Sammi's Deli) 5:30pm 3MB - (SMW)	31 6:30pm Alcohol Anon (SMW)

MESSANGER DEADLINE

WESTLAKE UNITED METHODIST CHURCH STAFF

Rev. Mollie Brown, Senior Pastor mgbrown@westlakeumc.org
Rev. Paige Boyer, Associate Pastor pboyer@westlakeumc.org
Rev. Don Lefelar *Volunteer Visitation Pastor*
Mario Clopton-Zymler *Worship Leader, SMW*
Jill Farkas *Custodian, SC*
Cindy Fischbach *Finance Manager*
Jeanne Halaby *Nursery Assistant, SC*
Betsy Kaiser *Nursery Assistant, SC*
Gretty Myers *Stephen Ministry Coordinator*
Chris Neely *Director of Music Ministries*
Ellie Peiffer *Director of Faith Formation*
Lynne Wolf *Office Coordinator*
WUMC Volunteer Librarian: Katie Salis, SC

OTHER PASTORS CONNECTED TO THIS CONGREGATION:

Rev. Judy Wismar Claycomb Rev. Dr. Richard Lehto
Rev. Ron Dietrich Rev. Bob Remington
Rev. Diana Guyette Rev. Tom Taylor
Rev. Don Lefelar

Coming Up

- 7/15 Westlake Ecumenical Vacation Bible School (p. 8)
7/28 Back to School Ice Cream Party - SMW (p. 2)
8/3 Meditative Walk and Journaling (p. 4)
8/11 Cruisin' Westlake (p. 3)
8/17 Day of Fellowship & Mission Conversation (p. 5)
8/25 Outdoor Worship and End of Summer Picnic Potluck (p. 2)
10/26 Women's Saturday Morning Retreat (p. 4)

SC – Suburban Campus SMW – Simpson Metro West Campus

*** MESSENGER ARTICLES FOR SEPTEMBER: DUE TUESDAY, AUGUST 13TH ***

Mailed July 1, 2019
DATED MATERIAL—DO NOT DELAY



(440) 871-3088
westlakeumc@westlakeumc.org

www.westlakeumc.org/simpson
Cleveland, Ohio 44102
8519 Clark Ave
Simpson Metro West Campus

www.westlakeumc.org
Westlake, Ohio 44145
27650 Center Ridge Road
Suburban Campus

**WESTLAKE
UNITED METHODIST
CHURCH**

RETURN SERVICE REQUESTED