

THE MESSENGER



To live so that others will become disciples of Jesus Christ for the transformation of the world.



"I'm so glad I live in a world where there are Octobers," extolls Anne of Green Gables. October is when fall sets in, the temperatures drop and pumpkins emerge in our coffee, on our porches. It's when we start to get ready for winter - it is a time of transition.

I know lots of people who love fall. And I'll confess, it's not my favorite season, but I can see the appeal. I'm a spring fan - another season of transition. We need to have this liminal space as we move from summer to winter, as we move from one season to another. Sometimes these transitions are fast and others they dawdle along. But the transition is all a part of it. The in between is indeed an important step along the way.

Sometimes, we want to rush the middle parts - to just get to the next thing. Other times we might prefer to linger in the in-between, delaying the arrival of things to come. Perhaps we need to cultivate our abilities to sit in this middle space. To wait expectantly for what is coming.

Instead of focusing only on what is up ahead - whether with hope or dread - we find ourselves needing to be in between.

The writer of Ecclesiastes writes that there is a season for everything under heaven - A time plant and and time harvest, a time to weep and a time to laugh. They use these extremes to set up space between - for life is not all weeping and crying, the plant must grow between planting and harvest. The in-between is where we spend most of our lives. Ecclesiastes continues saying: "it is God's gift that all should eat and drink and take pleasure in all their toil."

And so we ought to celebrate the in-between - the middle spaces, the seasons of transition and the movement of God between where we were and where we are going.

We will celebrate the fall season with two special community events - one at each of our two campuses: Trunk or Treat on Oct. 20 at the Suburban Campus and a Fall Fest on Nov. 2 at the Simpson Metro West Campus. I hope you'll join us to celebrate the season and to be together in all our in-betweens.



A SITE OF WESTLAKE UNITED METHODIST CHURCH

Suburban Campus

27650 Center Ridge Road • Westlake, Ohio 44145
(440) 871-3088 • westlakeumc.org
Sunday Worship at 8:15, 10:00 and 11:28 a.m.



A SITE OF WESTLAKE UNITED METHODIST CHURCH

Simpson Metro West Campus

8519 Clark Ave • Cleveland, Ohio 44102
(440) 871-3088 • westlakeumc.org/simpson
Sunday Worship at 10:45 a.m.

News and Committee Reports

ONE CHURCH IN TWO LOCATIONS *Update*

Almost two years ago we began prayerfully discerning joining and imagining what ministry could be done in and around Simpson United Methodist Church. When we became one church in two locations in July of 2018, we worked together to connect with the community through Trunk or Treat, Bible study, and Vacation Bible School and have had some success. We gave ourselves 12 months to assess if that was the best location for our ministry. Now, over a year later, we have been considering our impact and how to expand our ministry to reach more people in our mission field around the Clark and W. 86th St. area, Gordon Square and the Ohio City areas.

The East Ohio Conference continues to support us, financially and by connecting us with a new ministry start consultant, Rev. Sue Nilson Kibbey. She is an ordained elder in The United Methodist Church who currently serves as the Director of the Missional Church Consultation Initiative (MCCI) for the West Ohio Conference, and was personally involved in leading Ginghamburg UMC in becoming a multi-campus church.

Through our work with Dr. Kibbey, two ministry task force teams were formed this summer to consider all aspects of the ministries in our mission field in the city of Cleveland. One team focused on recommending to Leadership Council a decision regarding continuing ministry in the current building at W. 86th St. and Clark Ave. The second team is focused on assessing ministry needs and possible locations for those ministries throughout our entire mission field in the city of Cleveland. Both teams are comprised of active WUMC members who worship at each of our campuses.

We look to the above areas because we are called by the greatest commandment found in Matthew 22:37-39 "You shall love the Lord your God with all your heart, and with all your soul, and with all your mind." This is the greatest and first commandment. And a second is like it: You shall love your neighbor as yourself." Our neighbors are not those we see regularly or who look like us, but all of God's children, no matter where they live, what they look like, or what their background may be. We are excited as we explore the opportunities to follow the Great Commission found in Matthew 28:19 "Go therefore and make disciples of all nations, baptizing them in the name of the Father and of the Son and of the Holy Spirit."

The recommendations of the Building Decision Team were discussed and passed by WUMC Leadership Council on October 1st. We will begin the process of selling the existing Simpson Metro-West building (8519 Clark Ave., Cleveland), relocating ministries and activities to other nearby sites and ceasing services and activities in the current building. We have informed, and are seeking approval of the North Coast District Committee on Church Location and Building and will seek approval at a WUMC Charge Conference.

We came to the conclusion that if we were to start a new

ministry in the area, we would not recommend the current Simpson location. It is located away from the activity and visibility of Lorain Road where there is little interaction with the surrounding community and there is limited parking.

We also concluded that the building is larger than currently needed and that necessary capital improvements to upgrade signage, lighting, bathrooms, floor surfaces, seating and other furniture and fixtures would be extensive and require significant capital infusion.

Leadership Council made the decision based on the finding that it is not in an ideal location for new ministries and the excessive expense of upgrading the facility.

We are currently looking at locations to continue worship, Bible Study, and youth group, while also seeking ways to connect to people where they are instead of expecting them to come to us. There is a change in church and society and we need to move to meet this change. Current trends show that "traditional" church is not reaching people. We need to be willing to go to where the people are, meet them, listen to them, and make new relationships as siblings in Christ. This may be new to us, maybe a little outside our comfort zones, but we know that God walks with us and supports us in our mission to bring the Good News of Jesus Christ to everyone. We have a responsibility to invite all and that means going where they are, and treating all with dignity and respect. When we turn inward we stagnate, when we go out and serve, we are living God's Great Commission.

*Together on the journey,
Kay Seabright Martin
WUMC Leadership Chair*

MINISTRY OPPORTUNITIES

Have you been looking for a sign of how God might use you in ministry? Here's that sign!

Help is needed to support the following very important ministries within the church:

- SMW Sunday School Teacher – 1 Sunday per month at 10:45am
- Suburban Campus Sunday School Admin/ Superintendent - 1 Sunday per month at 10am or 11:28am
- Hospitality Coffee Host Scheduler - quarterly schedules volunteer coffee hosts (SC)

Please speak to Rev. Paige or Ellie Peiffer to learn more!

News and Committee Reports (cont.)

With Sympathy

ROD ERSKINE, a long time member of the Suburban Campus passed away August 20th. A celebration of life service was held on September 7th at Westlake UMC.



GRACE HOMANY, a long time member of the Suburban Campus passed away August 31st. A celebration of life service was held on Sept. 5th at Chambers Funeral Home.

AMY SONADA, a long time member of the Suburban Campus and member of the choir, passed away Sept. 14th. A celebration of life service was held on Sept. 21st at Westlake UMC.

MARIAN LOUIS, long time member of the Suburban Campus, passed away Sept. 18th. A celebration of life service was held on Sept. 28th at Westlake UMC..

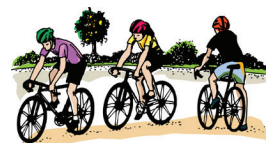
Please keep these families in our prayers.

AV MINISTRY HELP NEEDED.

We have an immediate need for help in both the 10 am and 11:28 services. The 10 am service requires two operators: one for video streaming and one for audio/ projector. We will provide necessary training and supervision. The only requirements are a passion to serve and commitment. **Contact Bob Myers 216-701-2064 or rdmyers2@sbcglobal.net for further information.**

DONATIONS OF BIKE ACCESSORIES WANTED

If you feel led, please be on the lookout for Bike Accessories (locks, helmets, training wheels, reflector lights, knee pads) to support our VBS ministries at Simpson Metro West. Now is the time that retailers are clearing out these items and you may find them ON SALE!!! We'd like to build on our success of getting kids in the SMW neighborhood out riding bikes and your donations will be meaningful in a young person's life.



Small Groups & Spiritual Growth



United
Methodist
Women
FAITH • HOPE • LOVE IN ACTION

Westlake United Methodist Women

UMW FALL LUNCHEON
THURSDAY, OCTOBER 10TH AT 12 NOON

The United Methodist Women will host their annual Fall Luncheon in Fellowship Hall on October 10th at 12 noon. Tickets are \$15 and the money will be used to support our mission projects. Any and all are welcome. After lunch, entertainment will be furnished by the "Solid Brass Quartet".

To obtain tickets, ask any UMW member or call Becky Dougan at 440-366-5031 or Judy Lawless at 440-327-7304.

Spiritual PARENTING GROUP

**BEGINS SUNDAY OCTOBER 6
AT 9AM IN ROOM 107**

Spiritual parenting is not perfect parenting – It's a way of parenting the child God has put in your life in ways that honor God and create environments that put your child in the path of the Divine.

In this DVD study for parents, grandparents & caregivers, author Michele Anthony helps us move from attempting to control our children's behavior to creating family environments where kids can know God and be changed by God.

Questions, contact Ellie Peiffer at faithformation@westlakeumc.org

Mission Opportunities & Updates



WINTER COAT COLLECTION FOR LOVE INC.

Love In the Name of Christ is collecting coats for the homeless and disadvantages in Cuyahoga County 9/30/19-10/28/19. New or used children's and men's coats, sizes XXL and larger, especially needed. Also collecting hats, scarves and gloves. All the coats are professionally dry cleaned and distributed through partner churches and ministries. Please bring your coats to the church and put in donations in the large box in the Fellowship Hall by October 27th.

COMMUNITY MEALS

SMW - Oct. 6 at 4:30: helpers needed to set-up, serve, and clean up. **Contact Kay Martin to volunteer.**

WSCH - Oct. 15: Groups needed to provide a monthly meal for 2020. **Contact Nickie Miller to sign-up.**

SC - Oct. 25: Sign-up on the main bulletin board to help.

DO YOU HAVE A HEART FOR MISSIONS?

Consider being a part of the Missions Team. New ideas are welcome! We meet the First Thursday of the month at 6 p.m. (10/3).



TWICE BLESSED FREE STORE

6515 Bridge Ave, Cleveland

HALLOWEEN COSTUME DONATIONS

Please put new or used in good condition costumes in donation bin in lobby by October 13.



UMVIM TEAM LEADER TRAINING

Share best practices for leading a mission team locally, nationally, and internationally. Lead by the East Ohio United Methodist Volunteers in Mission (UMVIM) coordinator, Kathy Dickriede. Registration deadline is Nov. 4, 2019.

SAT., NOVEMBER 9, 2019 - 9:30 AM-4:00 PM

Heart 4 the City - 954 Eastland Ave, Akron, OH 44305

\$10 Registration special! Cost includes lunch, team leader manual, and the required background check. **(WUMC Mission team will pay the cost of the training.)** \$17.00 The Mission Journey Handbook. This book is optional & serves as an accompaniment handbook to the Team Leader Manual. You will also be able to purchase copies at the training event.

Thank You

In recognition of UMVIM Sunday on October 20, we celebrate those who have participated in mission, locally, regionally, and internationally for WUMC. We have had members serve meals at West Side Community House, help at the Twice Blessed Free Store, Flat Rock Homes, Blue Rose Mission, the youth from SMW and SC went to CASS in Detroit, eight adults go to Cambodia, and many more! And as important as those who go, are the people who support them through prayer, donations, and financial support. Also, there is all the mission work that is done by UMW, UMM, Christ Care groups, Sunday School classes, and individuals. The WUMC congregation is very generous whenever there is a need, from backpacks and school supplies, to Christmas presents, Easter Cleaning buckets, disaster response donations. If there is a need and are asked, the WUMC congregation responds. Thank you for serving as the hands and feet of Christ!

SMW FOOD PANTRY

Help needed to unload Food bank delivery on the 4th Monday of the month (10/23) from 10 a.m. – 12 p.m. Bags are packed on Tuesday, and more help is needed on Wednesday from 8:30 a.m. – 12 p.m. to help check in people and carry their bags.

Food donations from the Suburban Campus can placed in the wagon in the lobby marked Simpson Metro West. We are currently requesting canned vegetables and reusable shopping bags.



Compassion & Congregational Care



**JOIN US for the
The Daniel Plan 5 Essentials!**

**It's not too late to start this journey or
continue walking the path to a healthy,
transformed life.**

**New reboot group of the Daniel Plan 5
Essentials begins on Sunday mornings
from 11:15 a.m. -12:00 p.m. on October 6,
facilitated by John and Amanda Peshek.**

This group is for anyone who has never
participated in the Daniel Plan and also for anyone
who has participated in the past and wants to
refocus your life with the Daniel Plan.

**Please sign up at suburban campus on bulletin
board in lobby or contact John and Amanda with
your questions - johnpeshek46@gmail.com.**

WOMEN'S SATURDAY MORNING RETREAT

SAT. OCT. 26 - 8:30 - 11:30 A.M.

*"He alone is my rock and my salvation, my fortress; I shall
not be shaken. On God rests my deliverance and my honor;
my mighty rock, my refuge is God." Psalm 62:6-7*

Plans are being made for a morning to recharge, feel en-
couraged and spiritually fed for the women and youth from
both our campuses. Please join us for a morning on the
shore of Lake Erie at the Woman's Club Pavilion in Lakewood
Park in nearby Lakewood, OH. We'll spend the morning
with Rev. Beth McKee, Director of Spiritual Care, Rainbow
and McDonald, UH. We'll be focusing on body, mind and
spirit as we enjoy our community of faithfilled women. The
cost is \$20.00 per person. Please invite a friend! Registration
forms are in the church lobby at both campuses with sign up
information and need to be completed and turned in by Oct.
6. The facility is handicap accessible with easy access to the
park's beautiful solstice steps and walkway along the lake.

This retreat is sponsored by Stephen Ministry, WUMC.

**Questions please contact Gretty Myers
at gretty.myers@gmail.com.**



HEALTH AND WELLNESS TEAM

The Health and Wellness Team is
offering a CPR Training class for all
adults and youth over the age of 12 yrs at WUMC Suburban
Campus.

On Sunday, October 6 from 5:30-8:00pm Westlake EMS will be
instructing interested participants on CPR.

**Please register by 10/1 at suburban campus on bulletin board
in lobby or contact Gretty Myers gretty.myers@gmail.com.**



**Find us on:
facebook®**

**BE SURE TO LIKE OUR WUMC FACEBOOK PAGE
FOR THE LATEST NEWS AND EVENTS! [CLICK HERE](#)**

INDIVIDUAL PRAYER TIME & COMMUNION With Prayer Partners

**SUNDAYS 9 – 9:30 AM
OR 11 – 11:30 AM
AT THE SUBURBAN CAMPUS**

Stephen Ministers are available every Sunday morning in
Room 207 (new location) from 9 – 9:30 a.m. and also 11
– 11:30 a.m. to offer a quiet, reflective time for individual
prayer and communion. We also have sets of prayer beads
available for you during this time.

ALL ARE WELCOME!



Compassion & Congregational Care (cont.)



Did you know?

IN 2019

- The annual Medicare Enrollment Period is October 15 - December 7, to change your Medicare Advantage plan or Medicare Part D drug plan. Any changes will take effect on January 1, 2020.
- By October 1st you will receive, by mail, an Annual Notice of Changes to your current plan. You should review the information carefully for changes to coverage, co-pays, and cost for 2020. Does the plan still meet your needs?

IN 2020

- The Medicare Advantage Open Enrollment (NEW in 2019) is January- March 31, it is the period when you can switch out of an Advantage plan into another Advantage plan or a Part D plan. Note: this enrollment window does not permit you to move between Part D plans.
- The supplemental Medigap Plans F and C are being discontinued for newly eligible Medicare beneficiaries 1/1/2020; and continue to be available for anyone eligible before 1/1/2020.
- Part D Donut Hole update! your out-of-pocket costs are limited to 25 percent for brand name and generic drugs if you are in the coverage gap.
- Medicare Advantage plans (primary coverage through a private insurance) continue to be a good option to Medicare. Many plans are offering Expanded Benefits that may include meals, transportation, plus dental, vision, hearing aid allowances and an over-the-counter allowance.

For more information, Patricia Whited Stineman, OSHIIP certified Medicare Education Counselor can be reached at 440-781-1383.

LET'S TALK MEDICARE!

OCTOBER 13TH, 27TH AND NOVEMBER 10TH

Roundtable discussion: 11:30-12:30pm

Individual counsels: 12:30-2:30 pm, walk in or by appt!

Do you have questions about your Medicare, but are unsure who to ask?

This is the time for you to get your questions answered and learn about the changes to Medicare for 2020. Join us for a roundtable discussion of Medicare. This will include a discussion of the coverage, cost and eligibility for Medicare 2020 options. Knowledge is key to making good decisions.

For more information, Patricia Whited Stineman, OSHIIP certified Medicare Education Counselor can be reached at 440-781-1383.

HOT HOT NEWS!

eMEDICARE initiatives

- The Medicare Plan Finder has been redesigned for the first time in a decade! The most used tool on Medicare.gov allows users to shop and compare Medicare Advantage and Part D plans.
- Check out Medicare's free new "What's Covered" available at the App Store and Google play! Use this app to get general cost, coverage and eligibility details for items and services covered by Part A and B.

For more information, Patricia Whited Stineman, OSHIIP certified Medicare Education Counselor can be reached at 440-781-1383.



Church Family Focus

Community Outreach Event Suburban Campus

TRUNK-OR-TREAT

SUNDAY, OCTOBER 20 FROM 4-6 PM

The entire church is invited to help out as we open the church to little ones and their families for a safe trick or treat experience. You can decorate the trunk of your car, you can work at a game, food table or welcome table. There is a job for everyone from set up to clean up to donating candy! The purpose is to build connections with people in the community so they will feel welcome at our church. Last year we had 400 people come to Trunk or Treat!



Please think about how you can support this outreach ministry.

- Donate CANDY!
- Decorate your car's trunk - sign up in the lobby or online at: <http://bit.ly/WUMCTrunks>
- Serve as an onsite host / volunteer- sign up in the lobby or online at <http://bit.ly/WUMCTreat>

QUESTIONS? Contact Rev. Paige at pboyer@westlakeumc.org

ALTAR FLOWERS

AT THE SUBURBAN CAMPUS

Many thanks to those who help to beautify our Altar with the purchase of flowers. Altar flowers honor, celebrate or remember a special person or event.



THANK YOU TO OUR OCTOBER ALTAR FLOWER SPONSORS:

- OCTOBER 6** - Rachel Amable – *In Memory of my mother, Emily Beauty Amable*
- OCTOBER 13** - Judy McDonald – *In Memory of Jack McDonald*
Carole Heppner – *In Memory of my twin brother, Carl Frey*
- OCTOBER 20** - Laurie & Henry Forbush – *In Memory of John & Betty Soza*
- OCTOBER 27** - Bill & John Penney – *In Memory of Marge Penney*

Community Outreach Event Simpson Metro West Campus

FALL FEST: THE GREAT TOMB RAID

SATURDAY, NOVEMBER 2 FROM 1-3 PM

After an amazing Trunk or Treat last year, we are going to hold another fun fall activity at Simpson, this time inviting families for a fun adventure of discovering pyramids, exploring tombs, encountering mysterious mummies and finding hidden treasures while engaging the story of Jesus.

We'll need your help to make this event happen!

You can help decorate, host games, and more!

Sign up at <http://bit.ly/SMWFall>

Save the Date!

All Church Potluck & Hanging of the Greens
SUNDAY, NOVEMBER 24TH FROM 4:30-7PM

Coffee Time Fellowship

AT THE SUBURBAN CAMPUS

Connect with old and new church friends on the East lawn after the 10am service and before 11:28! If inclement weather, coffee hour will be held in Fellowship Hall.

OUR COFFEE HOUR FELLOWSHIP IS NOT FREE



THANKS TO THE FOLLOWING GROUPS FOR HOSTING IN OCTOBER:

- OCTOBER 6** - Rachel Amable – *In Memory of my mother, Emily Beauty Amable*
- OCTOBER 13** - Judy McDonald
- OCTOBER 20** - Laurie & Henry Forbush
- OCTOBER 27** - The Twigg Family

Kid's Ministry & Youth News

GETTING TO KNOW YOUR BIBLE

Sunday, October 27th from 11am – 12noon

This class is for all children who just received a new Bible as well as any interested 4th, 5th & 6th graders. Rev Don Lefelar will review the structure and history of the Bible as well as the special features of the new Bible they were just given. He'll also share tips on how to use your Bible. Pizza will be served!

Please RSVP your child's attendance via email to Ellie Peiffer at faithformation@westlakeumc.org

MISSION: POSSIBLE FRIDAY, NOVEMBER 15TH AT 6PM

Mission:Possible Family Night is for anyone with kids 6th grade and under. Our November event continues our group's focus on Jesus' instructions to share what we can to stop hunger. Together, we'll share a meal and help prepare a Thanksgiving themed treat and decorations for those that come to our church's Community Meal. Also, get a preview of all the Mission:Possible family events coming up.

SUBURBAN CAMPUS 10AM SUNDAY SCHOOL

NURSERY INFANTS THROUGH AGE 3
Kids begin & end in the nursery room 202

PREK & KINDERGARTEN
Ages 4, 5 & K
Kids begin & end in classroom 201

LOWER ELEMENTARY
Grades 1, 2, & 3
Begin in worship, pick up in Room 102-103

UPPER ELEMENTARY
Grades 4, 5 & 6
Begin in worship, pick up in room 106-107

SPECIAL NEEDS
Children begin & end in room 203

**11:28AM SUNDAY SCHOOL
BEGINS & ENDS IN WORSHIP**

Congratulations

to the following 4th graders who received a Bible in Worship this Fall.

**LENA GARRETT
FRANK LEADER
ADELINE MERRILL
SIENNA PAHLS
ELI HEBERLEIN**

You are in our prayers as you continue to grow in faith, wisdom & knowledge!

WHAT ARE THE KIDS LEARNING ABOUT IN SUNDAY SCHOOL THIS MONTH?

The Sunday School Lessons and Scripture References in October teach us how to live as a follower of Jesus as we continue the journey through the season of Pentecost.

OCTOBER 6

Faith Passed Down - 2 Timothy 1:1-14

OCTOBER 13

Jesus Heals Ten - Luke 17:11-19

OCTOBER 20

The Widow and the Judge - Luke 18:1-8

OCTOBER 27

The Pharisee and the Tax Collector - Luke 18:9-14

ACOLYTE SCHEDULE SIGNUP:

Please sign your child up to participate as an acolyte in the 10am Sunday worship at the Suburban Campus. Acolytes should report to the narthex at 9:55am to robe and receive any special instructions for the day from the Usher Team.

Sign up via link: <https://www.signupgenius.com/go/70A0A4DA8A72DA6F85-acolyte>

Our Mission:

**TO LIVE SO THAT OTHERS WILL WANT
TO BE FOLLOWERS OF JESUS.**

Youth News

SIGN UP FOR TEXT MESSAGES TO STAY INFORMED ABOUT YOUTH GROUP!

This year, we'll also be using "Remind" to send texts to youth and parents.

For [SC Youth Group](#) updates, text @youthwumc to the number 81010.

For [SMW Youth Group](#) updates, text @smwyouth to the number 81010

For [Donuts and Discussions](#) updates, text @donutswum to the number 81010.

For [Confirmation](#) updates, text @confirmwum to the number 81010.

Both parents and youth should sign up for these texting tools.

We will still use email for longer updates and you can sign up for emails by going to <http://bit.ly/WUMYFEmail>

Suburban Campus October Youth Group Schedule

October 6 - 5:30 – 8pm CPR Training

*Make sure you eat dinner before hand

October 13 - 2 pm Poverty Simulation Second Chance:

<http://bit.ly/WUMCSept22>

October 20 - 4 to 6 pm Youth Help at Truck or Treat

October 27 - 5:30 – 7:30pm Mission Planning Meeting at Westlake Suburban Campus

November 3 - 5:30 – 7:30pm Youth Group

November 10 - 5:30 – 7:30pm Youth Group – Outing – TBD

SMW Campus October Youth Group Schedule

October 2 - Wednesday Night Bible study

October 9 - Wednesday Night Bible study

October 16 - Wednesday Night Bible study

October 23 - Wednesday Night Bible study

October 27 - Mission Planning Meeting at Westlake Suburban Campus

October 30 - No Wednesday Bible Study - Food Pantry day.

November 2 - Help at Great Tomb Raid Fall Fest

YOUTH PAPERWORK FOR 2019-2020 SCHOOL YEAR

Please download and fill out the registration paperwork for the year and bring it to the Back to Youth Potluck on Sept. 15. <http://bit.ly/WUMCYouthForms>

PROVIDE DINNER FOR SUNDAY EVENING YOUTH GROUP!

Sunday Evenings from 6-6:45 pm, we will have dinner and worship. The worship time will lead into separate discussion time for middle and high school students. We need your help! **Parents, sign ups for the first half of 2019 are now up, so please sign up to prepare the meal at <https://signup.com/go/bkAqvcG>.**

YOUTH GROUP HELP NEEDED!

We are always looking for more adults to help out with youth group! In particular, we need someone to come and lead games from 5:30 to 6 as well as someone to help lead discussions time from about 6:45 to 7:30. Are you interested in working with our youth? **Contact Rev. Paige at pboyer@westlakeumc.org.**

WANT WEEKLY UPDATES FOR WHAT'S HAPPENING WITH OUR YOUTH GROUPS?

SIGN-UP TO OUR E-NEWSLETTER:
[HTTP://EEPURL.COM/DD9FOX](http://EEPURL.COM/DD9FOX)

Financial Information

Instead of an envelope with a check or cash on Sunday, there are two other ways you can make contributions to the General Operating Fund for Westlake UMC:



DIRECT DEPOSIT: Scheduled automatic transfers from your checking account to the WUMC account. Please contact Stacey Johnson, Finance Manager for the form needed at finance@westlakeumc.org



ONLINE GIVING: Use your credit card via our website at westlakeumc.org. In the lower left corner of the home page you will see a button for Online Giving — near “Live Streaming” — You do not have to login to contribute, but can create profile if desired. This can be a one-time contribution or regularly scheduled contributions.

The August and September financials will be reported in the November Messenger



YOU CAN JOIN WESTLAKE UMC AT THE 10:00AM SERVICE WITH **LIVE STREAMING** FROM OUR SUBURBAN CAMPUS.**




Traveling? Can't make it to church on a Sunday morning? Worship with us via our website: westlakeumc.org for the 10:00 service. You will see the link to the broadcast in the lower left corner of the home screen. You are also invited to register your attendance, send prayer requests, and/or make contributions online.

****Please note that due to copyright & licensing restrictions, not all music or multimedia presentations may be broadcast.**



October 2019



Sun	Mon	Tue	Wed	Thu	Fri	Sat
		1	2	3	4	5
				9am Bible Study (207) 10:30am UMW Board (107) 5:30pm Marijuana Anon(100) 6pm Mission Team (207) 7pm Choir Rehearsal	7am Men's Breakfast (Sammi's Deli) 3:30-6:30pm Theater Grp (FH) 5:30pm 3MB - (SMW) Directory Picture Day SMW	11am Humphrey Memorial Service 6:30pm AA (SMW)
6	7	8	9	10	11	12
9am Confirmation Class (100) 9am Faithlinks (Library) 9am Daniel Plan (102) 11:15am Daniel Plan (100) 4:30pm Comm Meal (SMW) 5pm Bible Study (207) 5:30pm CPR Training (SC)	12:30pm ChristCare-EP (205) 7pm ChristCare- G/J/L (205)	12-8pm Clergy/SPR Consult (207) Messenger Deadline	11am Bible Study (SMW) 11:30am Purl Girls (100) 1:30pm Arthritis Exercise (103) 2pm ChristCare- JMc (205) 5:30pm Youth/Grp SMW 6pm Blue Bus (SMW) 7:30pm 11:28 Rehearsal	9am Bible Study (207) 12 pm UMW Fall Luncheon (FH) 5:30pm Marijuana Anon(100) 7pm Choir Rehearsal	7am Men's Breakfast (Sammi's Deli) 3:30-6:30pm Theater Grp (FH) 5:30pm 3MB - (SMW)	6:30pm AA (SMW)
13	14	15	16	17	18	19
9am Confirmation Class (100) 9am Faithlinks (Library) 11:15am Daniel Plan (100) 11:30am Medicare (207) 2pm Youth at Poverty Simulation (Ashland UMC) 5pm Bible Study (207)	12:30pm ChristCare-EP (205) 12:30pm Games 'N' Such (FH) 1:30pm Alzheimer's (100/7) 5:45 pm Trustees (207) 7 pm Stephen Ministry (100/7) 7pm ChristCare- G/J/L (205)	11am Charge Conf Q & A (207) 5pm WSCH Meal 5:30pm Bread on Bridge Meal/Worship (Nehemiah)	8am Staff Meeting (Panera) 11am Bible Study (SMW) 11:30am Purl Girls (100) 1:30pm Arthritis Exercise (103) 5:30pm Youth/Grp SMW 6pm Blue Bus (SMW) 7:30pm 11:28 Rehearsal	9 am Bible Study (207) 1pm Luncheon Club 5:30pm Marijuana Anon (100) 6pm G. Scouts-Susan (FH) 7pm Choir Rehearsal	7am Men's Breakfast (Sammi's Deli) 3:30-6:30pm Theater Grp (FH) 5:30pm 3MB - (SMW)	6:30pm AA (SMW)
20	21	22	23	24	25	26
9am Confirmation Class (100) 9am Faithlinks (Library) 9am Daniel Plan (102) 11:15am Daniel Plan (100) 5pm Bible Study (207)  Trunk or Treat 4-6pm SC	12:30pm ChristCare- EP (205) 7pm ChristCare- G/J/L (205)	5:30pm Bread on Bridge Meal/Worship (Nehemiah) Directory Picture Day SC	11am Bible Study (SMW) 11:30am Purl Girls (100) 1:30pm Arthritis Exercise (103) 5:30pm Community Meal (SC) 5:30pm Youth/Grp SMW 6pm Blue Bus (SMW) 7:30pm 11:28 Rehearsal	9 am Bible Study (207) 10 am UMW Missions (FH) 5:30pm Marijuana Anon (100) 7pm Choir Rehearsal	7am Men's Breakfast (Sammi's Deli) 3:30-6:30pm Theater Grp (FH) 5:30pm 3MB - (SMW)	8-12pm Women's Retreat (Lakewood Park) 6:30pm AA (SMW)
27	28	29	30	31	Directory Picture Days SC	
9am Confirmation Class (100) 9am Faithlinks (Library) 11:15am Daniel Plan (100) 11:30am Medicare (207) 5pm Bible Study (207) 5:30pm Youth Mission Plan (SC)	10am Food Truck (SMW) 12:30pm ChristCare-EP (205) 7pm ChristCare- G/J/L (205) 6 pm Finance (207) 7pm Leadership (207)	5:30pm Bread on Bridge Meal/Worship (Nehemiah)	9am Food Pantry (SMW) 11am Bible Study (SMW) 11:30am Purl Girls (100) 1:30pm Arthritis Exercise (103) 6pm Blue Bus (SMW) 7:30pm 11:28 Rehearsal	9 am Bible Study (207) 5:30pm Marijuana Anon (100) 7pm Choir Rehearsal		

WESTLAKE UNITED METHODIST CHURCH STAFF

Rev. Mollie Brown, Senior Pastor mgbrown@westlakeumc.org
Rev. Paige Boyer, Associate Pastor pboyer@westlakeumc.org
Rev. Don Lefelar *Volunteer Visitation Pastor*
Mario Clopton-Zymler *Worship Leader, SMW*
Jill Farkas *Custodian, SC*
Stacey Johnson *Finance Manager*
Jeanne Halaby *Nursery Assistant, SC*
Betsy Kaiser *Nursery Assistant, SC*
Gretty Myers *Stephen Ministry Coordinator*
Chris Neely *Director of Music Ministries*
Ellie Peiffer *Director of Faith Formation*
Anna Judkins *Organist*
Samantha Loomis *Children's Choir Director*
Lynne Wolf *Office Coordinator*
WUMC Volunteer Librarian: Katie Salis, SC

OTHER PASTORS CONNECTED TO THIS CONGREGATION:

Rev. Judy Wismar Claycomb Rev. Dr. Richard Lehto
Rev. Ron Dietrich Rev. Bob Remington
Rev. Diana Guyette Rev. Tom Taylor
Rev. Don Lefelar

Coming Up

- 10/6 CPR Class (p. 5)
10/6 Spiritual Parenting Group (p. 3)
10/10 UMW Fall Luncheon (p. 3)
10/13 Let's talk Medicare! (p. 6)
10/20 Trunk-Or-Treat (p. 7)
10/26 Women's Saturday Morning Retreat (p. 5)
10/27 Getting to Know Your Bible (p. 8)
11/2 Fall Fest: The Great Tomb Raid (p. 7)
11/9 UMVIM Team Leader Training (p. 4)
11/15 Mission: Possible (p. 8)
11/24 All Church Potluck & Hanging of the Greens (p. 7)

SC – Suburban Campus SMW – Simpson Metro West Campus

*** MESSENGER ARTICLES FOR OCTOBER: DUE TUESDAY, OCTOBER 15TH ***

Mailed October 1, 2019
DATED MATERIAL—DO NOT DELAY



westlakeumc@westlakeumc.org
(440) 871-3088

www.westlakeumc.org/simpson
Cleveland, Ohio 44102
8519 Clark Ave
Simpson Metro West Campus

www.westlakeumc.org
Westlake, Ohio 44145
27650 Center Ridge Road
Suburban Campus

WESTLAKE
UNITED METHODIST
CHURCH

RETURN SERVICE REQUESTED